

Lenti-X™ Tet-On® Advanced Inducible Expression System User Manual



Clontech

United States/Canada
800.662.2566

Asia Pacific
+1.650.919.7300

Europe
+33.(0)1.3904.6880

Japan
+81.(0)77.543.6116

Clontech Laboratories, Inc.
A Takara Bio Company
1290 Terra Bella Ave.
Mountain View, CA 94043
Technical Support (US)
E-mail: tech@clontech.com
www.clontech.com

Cat. No. 632162
PT5144-1 (PR0Y3747)
Published November 2010

Table of Contents

I. Introduction	3
II. List of System Components	6
III. Additional Materials Required	7
IV. Safety Guidelines for Working with Lentiviruses	10
V. Protocol Overview	11
A. General Cell Culture and Lentivirus Information	11
B. Establishing Your Inducible System.....	11
VI. Vector Manipulations.....	12
A. General Molecular Biology Techniques	12
B. Plasmid Vector Propagation & Construction of pLVX-Tight-Puro-GOI.....	12
VII. Producing Lentivirus from the Lenti-X Vectors	13
A. Protocol: Using the Lenti-X HTX Packaging System to Produce Lentiviral Supernatants.....	13
VIII. Lentivirus Titration	14
A. Summary	14
B. Protocol: Determining Viral Titer by Colony Formation	14
IX. Testing the Inducibility of Tet-On Advanced in Your Target Cells	15
A. Summary	15
B. Protocol: Testing Luciferase Induction in Target Cells	15
X. Transducing Target Cells with the Tet-On Advanced Lentiviruses	17
A. Summary	17
B. Protocol: Cotransducing Target Cells with the Lenti-X Tet-On Advanced Lentiviruses	17
XI. References	18
Appendix A: Vector Information	19
Appendix B: Additional Protocols	20
A. Protocol: Titrating Antibiotics for Selecting Single- and Double-Stable Cell Lines.	20

List of Figures

Figure 1. Gene induction in the Tet-Off® Advanced and Tet-On® Advanced Systems.	3
Figure 2. Producing lentivirus with the Lenti-X HTX Packaging System.....	4
Figure 3. Tetracycline activity in bovine sera	7
Figure 4. Establishing an inducible expression system in target cells with Lenti-X Tet-On Advanced	11
Figure 5. Advanced features of NucleoBond Xtra Maxi and Midi Columns and NucleoBond Finalizer. ...	12
Figure 6. Map of the pLVX-Tet-On Advanced Vector.....	19
Figure 7. Map of the pLVX-Tight-Puro Vector.....	19
Figure 8. Map of the pLVX-Tight-Puro-Luc Vector.....	19

I. Introduction

A. Summary

The **Lenti-X Tet-On Advanced Inducible Expression System** uses a highly efficient, lentiviral-based gene transfer technology to deliver our tightly regulated and highly responsive Tet-On Advanced Gene expression system into dividing and nondividing target cells, primary cells, and stem cells (*Clontechniques*, October 2007). While based on the original tetracycline (Tc)-regulated expression systems described by Gossen & Bujard (1992) and Gossen *et al.* (1995), the Tet-On Advanced System includes a novel, more highly developed and refined transactivator (Urlinger, *et al.* 2000; *Clontechniques*, January 2007), and incorporates an improved inducible promoter, P_{Tight} .

When cotransfected into 293T cells along with the **Lenti-X HTX Packaging Mix**, the Lenti-X Tet-On Advanced System Vectors in this kit produce very high titer supernatants containing infectious, replication-incompetent lentiviruses which are then used to transduce target cells. Cotransducing the regulator and response viruses into your target cells, creates a system that allows you to control the expression level of your gene of interest (GOI) by adjusting the concentration of the system's inducer, doxycycline (Dox; a tetracycline derivative) (Figure 1).

B. Elements of the Tet-On Advanced System

In *E. coli*, the Tet repressor protein (TetR) negatively regulates the genes of the tetracycline-resistance operon on the Tn10 transposon. TetR blocks transcription of these genes by binding to the *tet* operator sequences (*tetO*) in the absence of Tc. In the presence of Tc, TetR dissociates from *tetO* and transcription of resistance-mediating genes begins. Together, TetR and *tetO* provide the basis of regulation and induction for all of Clontech's Tet Systems.

- The Regulator Vector: pLVX-Tet-On Advanced.** The pLVX-Tet-On Advanced vector constitutively expresses the tetracycline-controlled transactivator, rtTA-Advanced (Urlinger *et al.*, 2000). This protein consists of a mutant TetR (rTetR) that possesses a "reverse" *tetO* binding phenotype (i.e. it binds to *tetO* sequences in the *presence of Dox*, rather than in its absence), which is fused to three minimal "F"-type activation domains derived from herpes simplex virus VP16 (Baron *et al.*, 1997, Triezenberg *et al.*, 1988). The gene for the rtTA-Advanced fusion protein is fully synthetic and utilizes human codon preferences to increase the protein's expression levels and its stability in mammalian cells. Cryptic splice sites were removed from the rtTA-Advanced cDNA sequence to increase production of mature mRNA. Expression of rtTA-Advanced protein is typically high enough to be readily detected by western analysis using the **TetR Monoclonal Antibody** (Cat. Nos. 631108 & 631109) (*Clontechniques*, January 2007).
- The Response Vector: pLVX-Tight-Puro.** The pLVX-Tight-Puro response vector contains P_{Tight} , the inducible promoter that controls expression of your GOI (*Clontechniques*, April 2003). The P_{Tight} composite promoter sequence was originally developed as the P_{tet-14} promoter in the laboratory of Dr. H. Bujard. It consists of a modified Tet-Responsive Element (TRE_{mod}), made up of seven direct repeats of an altered *tetO* sequence, joined to a modified minimal CMV promoter ($P_{minCMV\Delta}$). P_{Tight} also lacks binding sites for endogenous mammalian transcription factors, so it is virtually silent in the absence of induction. Upon induction in the presence of Dox, rtTA-Advanced binds to the P_{Tight} promoter on the response vector, activating transcription of the downstream gene (Figure 1).

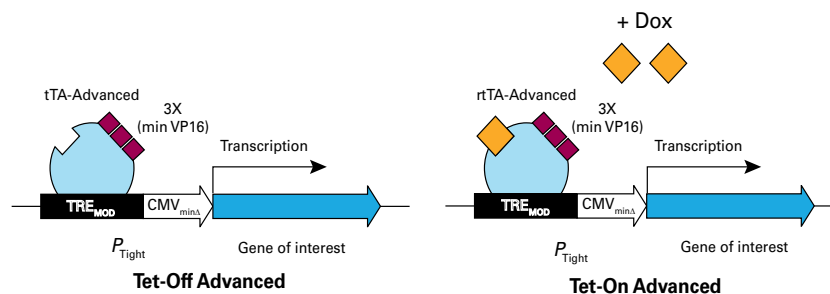


Figure 1. Gene induction in the Tet-Off® Advanced and Tet-On® Advanced Systems. The Tet-controlled transactivators for these systems (tTA-Advanced and rtTA-Advanced) are fusion proteins derived from either a wild-type or mutant version of the *E. coli* Tet repressor protein (TetR or rTetR, respectively). The modified TetR proteins are each joined to three minimal transcription activation domains which activate transcription when the transactivators are bound to the tetracycline response element (TRE) in P_{Tight} . In Tet-Off Advanced Systems, the inactive basal state is maintained in the presence of Dox, and the system is activated by Dox withdrawal. Tet-On Advanced Systems are active in the presence of Dox. Induction in either system produces high-level transcription of your gene from P_{Tight} .

I. Introduction continued

C. Lenti-X Vectors

The Lenti-X Expression Vectors used in this kit possess a lentiviral packaging signal (Ψ) and the LTRs necessary for vector replication and packaging, as well as elements to improve transgene expression, titer, and overall vector function (see Appendix A). A woodchuck hepatitis virus posttranscriptional regulatory element (WPRE) believed to promote the processing and nuclear export of RNAs, imparts a dual benefit (Zufferey et al. 1999). First, it acts within the context of viral genomic RNAs to enhance packaging, which helps to increase the viral titers of supernatants produced from 293T packaging cells. Second, it boosts expression of your cDNA transgene in target cells by facilitating the production of mature mRNA from transcripts initiated by the vector's internal promoter (e.g. P_{CMV} or P_{Tight}). Lenti-X vectors also contain a central polypurine tract (cPPT; also called a “DNA flap”) that increases nuclear importation of the viral genome during target cell infection, resulting in improved vector integration and more efficient transduction (Zennou et al., 2000). The Rev-responsive element (RRE) is essential for the nuclear export of unspliced viral genomic RNA (Cochrane et al., 1990).

D. Lenti-X HTX Packaging

- Very High Titers:** The **Lenti-X HTX Packaging Mix** is a plasmid mixture that provides all the necessary lentiviral packaging components. When transfected into 293T cells using the high-efficiency **Xfect™ Transfection System**, the packaging mix expresses the Pol (RT), IN, Tat, Rev, and Gag lentiviral proteins; and the VSV-G envelope protein (Wu et al., 2000; *Clontechiques*, October 2007). These proteins are required for forming complete, VSV-G pseudotyped virus particles, and for replicating and packaging the recombinant viral genome produced from the cotransfected lentiviral expression vector (Figure 2). The Packaging Mix includes a vector that expresses the Tet-Off® transcriptional activator (tTA), which in turn drives the expression of specific viral proteins to very high levels. This expression strategy, combined with the high-efficiency transfections produced by Xfect, result in very high titers of VSV-G pseudotyped lentivirus. Titers can be as much as 25–50 times higher than those produced by other commercially available systems. As a result, these viral supernatants can often be used to infect target cell without prior concentration.
- Highest Safety:** For added biosafety, the genes that express the viral packaging proteins have been split onto different plasmids to prevent the collective transfer of these coding sequences into viral particles during the packaging process. The lack of sequence homology between the packaging mix plasmids and the Lenti-X Vectors also prevents transfer via homologous recombination. The split-gene strategy effectively prevents the production of replication-competent lentivirus, e.g. the viruses cannot replicate in target cells.

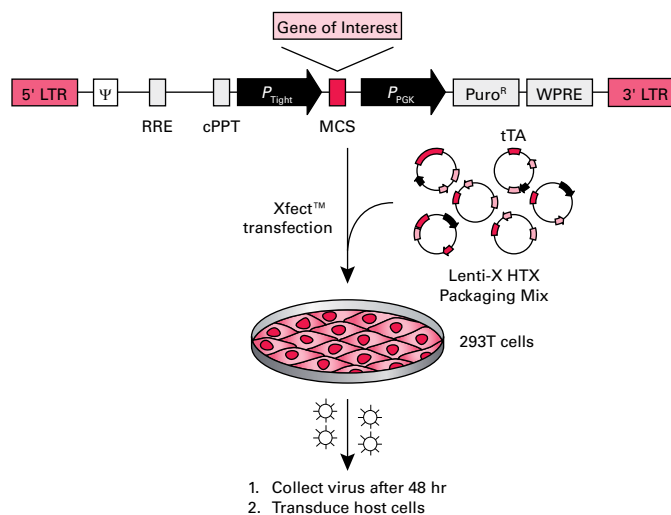


Figure 2. Producing lentivirus with the Lenti-X HTX Packaging System. A Lenti-X Vector (pLVX-Tight-Puro) and the Lenti-X HTX Packaging Mix are cotransfected into 293T cells using the highly efficient Xfect transfection system. High titer supernatants are ready for use 48 hr after transfection.

I. Introduction continued

E. Benefits of the Tet-Advanced Expression Systems

The Tet-Off Advanced and Tet-On Advanced Systems yield very high maximal expression levels and extremely low basal expression, coupled with high sensitivity and control. Advantages over other inducible mammalian gene expression systems are listed below.

- **Extremely tight regulation.** In the absence of induction, the Tet-On Advanced transactivator has no residual binding to the TRE in P_{Tight} ; thus basal expression is often undetectable.
- **Highly specific.** The binding of the Tet-Advanced TetR-derived domains to the *tetO* target sequences of P_{Tight} is highly specific and does not activate off-target cellular genes. This high degree of specificity may be due in part to the prokaryotic nature of these components acting within the context of a large eukaryotic genome lacking similar elements (Harkin *et al.*, 1999).
- **No pleiotropic effects.** Tc and Dox are prokaryotic antibiotics and when used at the concentrations required by the Tet-Advanced Systems, they have no known effects on eukaryotic cells.
- **High inducibility and fast response times.** In properly screened clones, maximal induction of the Tet-On Advanced System is often several thousand-fold and can be detected within 30 minutes after addition of Dox to the culture medium. In contrast, other mammalian systems often exhibit slow induction (up to several days), incomplete induction (compared to repressor-free controls), and low overall induction (often no more than 100-fold). Other systems may also require high, nearly cytotoxic levels of inducer (reviewed by Gossen *et al.*, 1993; Yarronton, 1992).
- **Highest absolute expression levels.** Maximal expression levels in the Tet Systems can be higher than expression levels obtained from the CMV promoter or other constitutive promoters. For example, Yin *et al.* (1996) reported that the maximal level of luciferase expression in HeLa Tet-Off cells transiently transfected with pTRE-Luc is 35-fold higher than that obtained with HeLa cells transiently transfected with a plasmid expressing luciferase from the wild-type CMV promoter.
- **Well-characterized effector.** In contrast to effectors used in other systems, such as ecdysone, Tc and Dox are inexpensive, well-characterized, and yield highly reproducible results. Dox binds with high affinity to either transactivator with and is essentially nontoxic at the effective concentrations. It is therefore the preferred effector substance and we recommend using it for all Tet-Advanced Systems. Note that Tet-On Advanced Systems will respond only to Dox, and not to Tc (Gossen & Bujard, 1995).
- **Promoter activation, rather than repression.** To completely shut off transcription, repression-based systems require very high levels of repressor to ensure 100% occupancy of the regulatory sites. The presence of high repressor levels also makes it difficult to achieve rapid, high-level induction (Yao *et al.*, 1998). For a more complete discussion of the advantages of transcription activation versus repression, see Gossen *et al.* (1993).
- **The Tet-On Advanced and Tet-Off Advanced Expression Systems are superlative control systems for transgenic mice.** The Tet System has become the *de facto* method of choice for generating inducible transgenic lines (Gossen & Bujard, 2002). No other inducible system has proved as successful. Indeed, more than 180 mouse lines have been described that express the *tTA*/*rtTA* genes under the control of a variety of tissue-specific promoters or express various target genes under control of Tet-inducible promoters. A list of these mouse lines can be found on the TET Systems website (http://www.tetsystems.com/main_transgenic.htm). With its greatly increased sensitivity to Dox, the Tet-On Advanced System brings additional advantages to the development of inducible transgenic mice. This may be particularly helpful when control of gene expression in the brain is required, as the presence of the blood-brain barrier limits the concentration of Dox that can be attained in the brain.



Nuclear Localization Signals

Adding a nuclear localization sequence (NLS) to either *tTA*-Advanced or *rtTA*-Advanced will alter the protein's function and is not recommended (M. Gossen & H. Bujard, personal communication). An NLS will increase maximum expression but will also elevate background expression due to altered binding affinity to the *tetO* sequences (unpublished observations).

I. Introduction continued

F. Doxycycline

The doxycycline concentrations used with Clontech's Tet-On Advanced and Tet-Off Advanced Expression Systems are far below cytotoxic levels for either cell culture or transgenic studies. Of note, Tet-On Systems respond only to Dox, and not to Tc (Gossen & Bujard, 1995).

G. Inducible Luciferase Control Vector

The system is supplied with a luciferase reporter vector, pLVX-Tight-Puro-Luc, that can be used to test the inducibility of the Tet-On Advanced System in target cells, and optimize transduction conditions.

II. List of System Components

Store all plasmids, Xfect™ components, and Fetal Bovine Serum at –20°C.

Lenti-X Tet-On Advanced Inducible Expression System (Cat. No. 632162)

Package Contents

- Lenti-X Tet-On Advanced Vector Set
 - 10 µg pLVX-Tet-On Advanced Vector (0.5 µg/µl)
 - 10 µg pLVX-Tight-Puro Vector (0.5 µg/µl)
 - 10 µg pLVX-Tight-Puro-Luc Control Vector (0.5 µg/µl)
- 720 µl Lenti-X HTX Packaging Mix (20 reactions)
- Xfect (also available as Cat. No. 631317)
 - 150 µl Xfect Polymer
 - 20 ml Xfect Reaction Buffer
- 50 ml Tet System Approved FBS, US-Sourced (also available as Cat. No. 631105)
- Lenti-X GoStix™ (Sample)

Product User Manuals

- Lenti-X Tet-On Advanced Inducible Expression System User Manual (PT5144-1)
- Lenti-X Lentiviral Expression Systems User Manual (PT5135-1)
- pLVX-Tet-On Advanced Vector Information (PT3990-5)
- pLVX-Tight-Puro Vector Information (PT3996-5)
- pLVX-Tight-Puro-Luc Vector Information (PT3997-5)
- Lenti-X HTX Packaging System Protocol (PT5135-2)
- Xfect Protocol-at-a-Glance (PT5003-2)
- Lenti-X GoStix Protocol-at-a-Glance (PT5123-2)

Visit www.clontech.com for a current list of products and cell lines available for the Tet Systems.

III. Additional Materials Required

A. Cell Lines for Lentivirus Packaging and Titration

- **Lenti-X 293T Cell Line** (Cat. No. 632180): This is a HEK 293T-derived cell line optimized for Lenti-X virus production. To obtain high-titer supernatants of infectious lentivirus, your Lenti-X Vector and the **Lenti-X HTX Packaging Mix** are cotransfected into Lenti-X 293T cells using the **Xfect™** transfection reagent. The transfected cells will consistently produce very high titers of pseudotyped lentivirus.
- **HT-1080 cell line**: American Type Culture Collection HT-1080 (ATCC No. CCL-121™) [Recommended]. This cell line is easily transduced by recombinant lentiviruses and is frequently used for lentiviral titration. Alternatively, virus stocks can be titrated with the **Lenti-X qRT-PCR Titration Kit** (Cat. No. 632165) or the **Lenti-X p24 Rapid Titer Kit** (Cat. No. 632200). Or, you can save time and test the quality of your lentiviral supernatant in 30 seconds using **Lenti-X Go Stix** (Cat. Nos. 631241, 631243 & 631244).

B. Mammalian Cell Culture Supplies

- **Lenti-X 293T Cell Line growth medium**: 90% Dulbecco's Modified Eagle's Medium (DMEM) with high glucose (4.5 g/L), 4 mM L-glutamine, and 3.7 g/L sodium bicarbonate (Sigma-Aldrich Co., No. D5796); and 10% *tetracycline-free* fetal bovine serum. *Add 1 mM sodium pyruvate.*
- **HT-1080 growth medium**: 90% Dulbecco's Modified Eagle's Medium (DMEM) with high glucose (4.5 g/L), 4 mM L-glutamine, and 3.7 g/L sodium bicarbonate (Sigma-Aldrich Co., No. D5796); and 10% fetal bovine serum. *Add 1 mM sodium pyruvate.*
- **Tetracycline-free fetal bovine serum** (FBS; see important information below). We *strongly recommend* using **Tet System Approved FBS** (Cat. Nos. 631101 & 631106) for all packaging cell transfections and for culturing target cells when using a Lenti-X Tet-Advanced Inducible Expression System.



Tetracycline-Free Fetal Bovine Serum (FBS) for Packaging Cell and Target Cell Culture

Many lots of bovine sera are contaminated with Tc or Tc-derivatives which can affect basal expression or inducibility in Tet Expression Systems (Figure 3). It is critical that the FBS used for cell culture not interfere with Tet-responsive expression.

- The Lenti-X HTX Packaging Mix utilizes Tet-Off transactivation to drive high-level expression of specific viral packaging proteins. The presence of Tc contaminants will reduce expression of these components and will negatively affect viral titers. *Therefore, lentiviral packaging in 293T cells must be performed using Tc-free FBS.*
- Tc-contaminants will diminish the performance of the Tet-On Advanced System in target cells by elevating basal expression and reducing fold-induction.
- These problems can be eliminated by using a **Tet System Approved FBS** (Cat. Nos. 631101, 631105, 631106 & 631107) from Clontech. These sera have been functionally tested in our Tet Systems and found to be free of contaminating Tc activity.

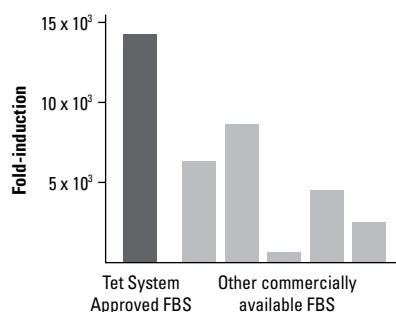


Figure 3. Tetracycline activity in bovine sera. The CHO-AA8-LucTet-Off Control Cell Line was grown in media prepared with different lots of FBS. Average uninduced expression level = 0.21 RLU (n=21, S.D.=0.07); maximum expression levels varied from 123 to 3,176 RLU.

III. Additional Materials Required continued

B. Mammalian Cell Culture Supplies (continued)

- Cell growth medium and supplies specific for your target cells
- Sodium pyruvate solution, 100 mM, sterile filtered (Sigma-Aldrich Co., No. S8636), for supplementing cell culture media
- Penicillin/streptomycin solution of 10,000 units/ml penicillin G sodium and 10,000 µg/ml streptomycin sulfate (100X; Sigma-Aldrich Co., No. P0781)
- Trypsin-EDTA (Trypsin; Sigma-Aldrich Co., No. T3924)
- Dulbecco's phosphate buffered saline (DPBS; Sigma-Aldrich Co., No. D8662)
- L-glutamine solution, 200 mM, sterile filtered (Sigma-Aldrich Co., No. G7513) [Optional]
- Cell Freezing Medium, with or without DMSO (Sigma-Aldrich Co., No. C6164 or No. C6039)
- Tissue culture plates (100 mm) for packaging cell transfections; other plates and flasks as required
- Polystyrene culture tubes, 12 x 75 mm (e.g., BD Falcon™ No. 352054), for packaging cell transfections
- Sterile microfuge tubes (1.5 ml) for use in titrating virus stocks; and cryovials for freezing virus stocks
- Crystal violet (Sigma-Aldrich Co., No. C3886), 1% solution prepared in ethanol, for staining colonies of transduced cells in the virus titration protocol (Section VIII.B)
- Cloning cylinders (PGC Scientific, No. CORN31666, -31668, or -316610), for isolating clones of stable transductants

C. Antibiotics for Selecting Transduced Cells

Prior to using these antibiotics for selecting transduced cells, determine the optimal selection concentration for each cell type as shown in Appendix B.

- G418 (Cat. No. 631307) is used for selecting cells transduced with the LVX-Tet-On Advanced virus and for titrating the corresponding lentivirus stock.
 - Recommended working concentration range: 50–800 µg/ml
 - Maintenance of stable cell lines: 100 µg/ml
 - Selection (e.g., HEK 293, HeLa or CHO cells): 400–500 µg/ml
- Puromycin (Cat. Nos. 631305 & 631306) is used for selecting cells transduced with the LVX-Tight-Puro-GOI or LVX-Tight-Puro-Luc viruses, and for titrating the corresponding lentivirus stocks.
 - Recommended working concentration range: 0.25–2 µg/ml
 - Maintenance of stable cell lines: 0.25 µg/ml
 - Selection (e.g., HEK 293, HeLa or CHO cells): 0.5–10 µg/ml

D. Lentivirus Titration Kits

For accurate and consistent transductions, we highly recommend titrating your lentiviral stocks. The **Lenti-X qRT-PCR Titration Kit** (Cat. No. 631235) provides a fast and simple qRT-PCR-based titration method (*Clontechiques*, January 2008). The kit determines viral RNA genome content using qRT-PCR and SYBR® technologies, and titrates virus stocks in ~4 hr. The **Lenti-X p24 Rapid Titer Kit** (Cat. No. 632200) uses ELISA to specifically measure the amount of p24 capsid protein present in your viral supernatant, and then correlates the level of p24 directly to virus titer. Alternatively, you can use **Lenti-X GoStix** (Cat. Nos. 631241, 631243 & 631244) to test the quality of your viral supernatant in just 30 seconds. The GoStix detect lentiviral p24 in only 20 µl, and can be used to determine whether virus production is within a usable range or for selecting the best time to harvest your virus.

III. Additional Materials Required continued

E. Lentivirus Purification

Virus purification enables you to remove cellular contaminants that could otherwise adversely affect your transduction experiments. **Lenti-X™ Maxi Purification Kits** (Cat. Nos. 631233 & 631234) produce outstanding yields of highly purified virus from crude supernatants. The gravity column-based protocol is fast, simple, and effective, and produces virus that is fully intact and fully functional.

F. Lentivirus Concentration

Use **Lenti-X™ Concentrator** (Cat. Nos. 631231 & 631232) to increase your available titer up to 100-fold without ultracentrifugation. Concentrated virus allows you to infect target cells at higher MOIs without making more virus or transfecting additional packaging cells.

G. Polybrene for Viral Transductions

Polybrene (hexadimethrine bromide; Sigma-Aldrich, No. H9268) is needed for the standard infection/transduction protocol to facilitate lentiviral gene transfer. Polybrene is a polycation that reduces charge repulsion between the virus and the cellular membrane. The optimal polybrene concentration for your target cells (maximal infectivity with minimal toxicity) should be determined empirically by testing concentrations in the range of 2–12 µg/ml. For cells that are especially sensitive to polybrene, consider using **RetroNectin® Reagent**.

H. RetroNectin® Reagent for Enhanced Viral Transductions

RetroNectin Reagent (available from Clontech Laboratories, Inc. or Takara Bio USA, Cat. Nos. TAK 100A, TAK 100B) is a recombinant fragment of fibronectin (CH-296) that can be used to greatly improve retroviral and lentiviral transduction efficiencies (*Clontechniques*, October 2008). RetroNectin is coated onto tissue culture plates to provide a substratum that binds both viruses and cells. The colocalization of virus and cells on this novel substratum improves cell-virus contact and enhances transduction. This is especially useful for cells grown in suspension (e.g. lymphocytes and lymphocyte cell lines) and other cells that are difficult to transduce, such as hematopoietic stem cells; or for cells that may be especially sensitive to polybrene. Visit www.takarabio.com for more information.

I. Doxycycline

Doxycycline (Cat. No. 631311) is required for inducing gene expression in cells transduced with the complete Lenti-X Tet-On Advanced System. Make a solution of 1–2 mg/ml in H₂O. Filter sterilize, aliquot, and store at –20°C in the dark. Use within one year.

J. Luciferase Assay

A method for assaying luciferase expression is required for use with the LVX-Tight-Puro-Luc Control Vector. Use any standard luciferase assay system for detecting firefly luciferase. A luminometer is also required.

IV. Safety Guidelines for Working with Lentiviruses



The protocols in this User Manual require the production, handling, and storage of infectious lentivirus. It is imperative to fully understand the potential hazards of, and necessary precautions for, the laboratory use of lentiviruses.

The National Institute of Health and Center for Disease Control have designated recombinant lentiviruses as Level 2 organisms. This requires the maintenance of a Biosafety Level 2 facility for work involving this virus and others like it. The VSV-G pseudotyped lentiviruses packaged from the HIV-1-based vectors described here are capable of infecting human cells. The viral supernatants produced by these lentiviral systems could, depending on your insert, contain potentially hazardous recombinant virus. Similar vectors have been approved for human gene therapy trials, attesting to their potential ability to express genes *in vivo*.

For these reasons, due caution must be exercised in the production and handling of any recombinant lentivirus.

The user is strongly advised not to create VSV-G pseudotyped lentiviruses capable of expressing known oncogenes.

For more information on Biosafety Level 2 agents and practices, download the following reference:

- *Biosafety in Microbiological and Biomedical Laboratories (BMBL)*, Fifth Edition (February 2007) HHS Pub. No. (CDC) 93-8395. U.S. Department of Health and Human Services Centers for Disease Control and Prevention and NIH. Available on the web at <http://www.cdc.gov/od/ohs/biosfty/bmbl5/bmbl5toc.htm>

Biosafety Level 2: The following information is a brief description of Biosafety Level 2. *It is neither detailed nor complete.* Details of the practices, safety equipment, and facilities that combine to produce a Biosafety Level 2 are available in the above publication. If possible, observe and learn the practices described below from someone who has experience working with lentiviruses.

Summary of Biosafety Level 2:

- **Practices:**
 - Standard microbiological practices
 - Limited access to work area
 - Biohazard warning signs posted
 - Minimize production of aerosols
 - Decontaminate potentially infectious wastes before disposal
 - Use precautions with sharps (e.g., syringes, blades)
 - Biosafety manual defining any needed waste decontamination or medical surveillance policies
- **Safety equipment:**
 - Biological Safety Cabinet, preferably a Class II BSC/laminar flow hood (with a HEPA microfilter) used for all manipulations of agents that cause splashes or aerosols of infectious materials; exhaust air is unrecirculated
 - PPE: protective laboratory coats, gloves, face protection as needed
- **Facilities:**
 - Autoclave available for waste decontamination
 - Chemical disinfectants available for spills

V. Protocol Overview

PLEASE READ THESE PROTOCOLS IN THEIR ENTIRETY BEFORE STARTING

Successful results depend on understanding and performing the following steps correctly.

A. General Cell Culture and Lentivirus Information

The protocols in this User Manual provide only general guidelines for lentivirus use and mammalian cell culture techniques. Perform all steps involving cell culture using sterile technique in a Biosafety Level 2 tissue culture hood that has been approved for use with lentiviruses. For users requiring more information on lentiviruses, retroviruses, and mammalian cell culture, we recommend the following general references:

- *Retroviruses*, ed. by J. M. Coffin, S. H. Hughes & H. E. Varmus (1997, Cold Spring Harbor Laboratory Press, NY)
- *Culture of Animal Cells*, 5th Edition, by R. I. Freshney (2005, Wiley-Liss, NY)

B. Establishing Your Inducible System

The general strategy for establishing an inducible Lenti-X Tet-On Advanced System for expressing a GOI is shown in Figure 4, in which target cells are cotransduced with lentiviruses derived from the pLVX-Tet-On Advanced regulator vector and the pLVX-Tight-Puro-GOI response vector.

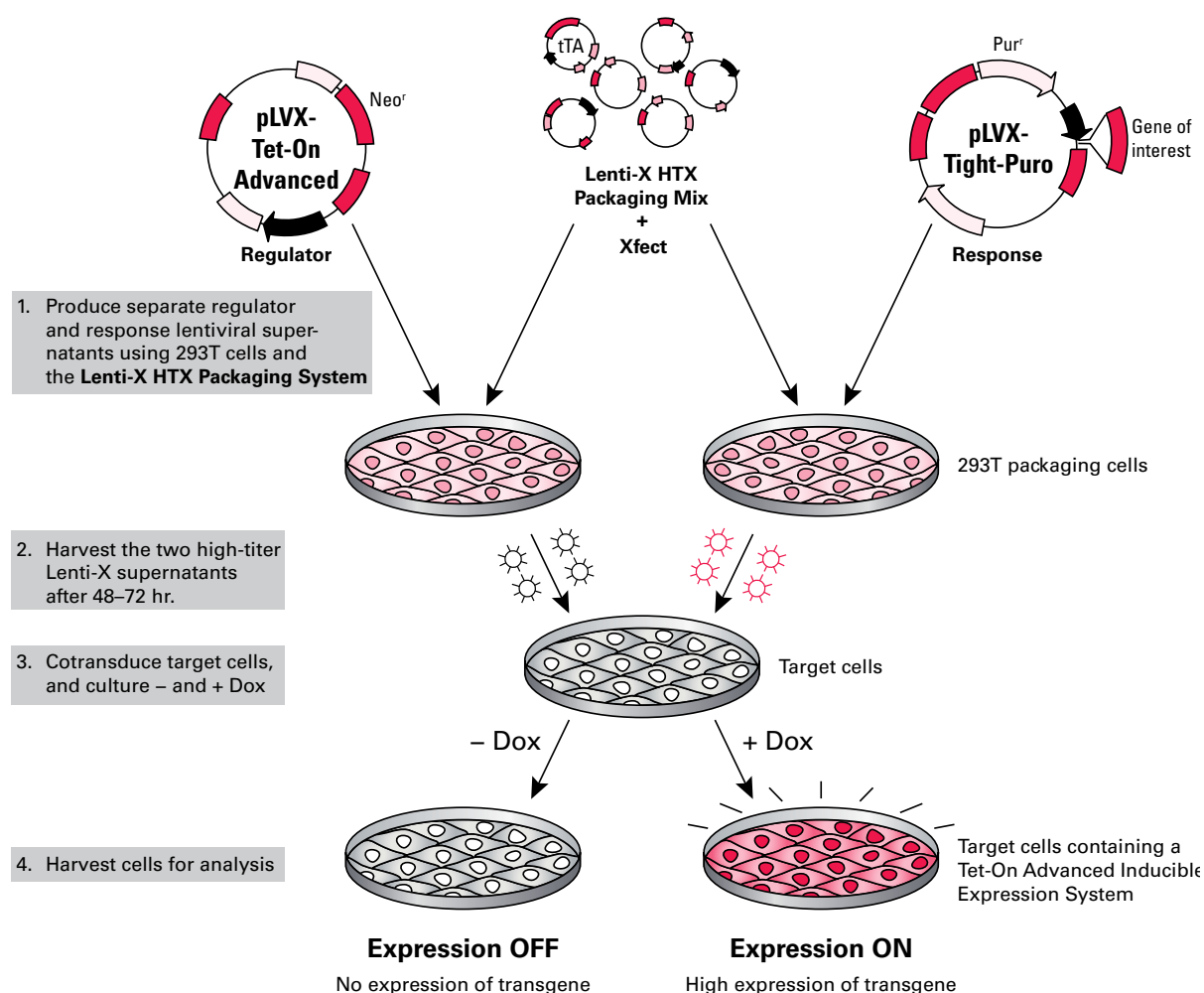


Figure 4. Establishing an inducible expression system in target cells with Lenti-X Tet-On Advanced. The Lenti-X HTX Packaging System and 293T cells are used to generate high-titer lentiviral supernatants from the pLVX-Tet-On Advanced Vector and from the pLVX-Tight-Puro Vector, which contains your gene of interest. Target cells are then simultaneously cotransduced with the two lentiviruses (~8 hr). After culturing for an additional 48–72 hr (+ and – Dox), the cells are harvested for analysis.

VI. Vector Manipulations

A. General Molecular Biology Techniques

These protocols contain only general information for propagating plasmid vectors and for preparing your customized pLVX-Tight-Puro expression construct. For users requiring more information on standard molecular biology practices and cloning techniques, we recommend the following laboratory references:

- *Current Protocols in Molecular Biology* ed. by F. M. Ausubel et al. (1995, John Wiley & Sons, NY).
- *Molecular Cloning: A Laboratory Manual* ed. by J. Sambrook et al. (2001, Cold Spring Harbor Laboratory Press, NY).

B. Plasmid Vector Propagation & Construction of pLVX-Tight-Puro-GOI

1. To ensure that you have a renewable source of plasmid DNA, transform each of the plasmid vectors provided in this kit into a suitable *E. coli* host strain [e.g., **Supercharge EZ10 Electrocompetent Cells** (Cat. No. 636756) or DH5 α]. See the enclosed Vector Information Packets for further DNA propagation details.
2. For pLVX-Tight-Puro cloning, prepare purified plasmid DNA using a suitable **NucleoBond®** or **NucleoSpin® Kit** (see www.clontech.com)
3. Using standard cloning techniques, insert your cDNA into the multiple cloning site (MCS) of pLVX-Tight-Puro. You can also use an **In-Fusion™ PCR Cloning Kit** (Cat. Nos. 639616-639624) which allows PCR products to be easily cloned into any vector.



Note: The cDNA or gene fragment must contain an ATG initiation codon. In some cases, addition of a Kozak consensus ribosome binding site (Kozak, 1987) may improve expression levels, but is often unnecessary. **The fragment or cDNA should not contain a polyadenylation signal.** The inclusion of such sequences between retro-viral LTRs can cause premature polyadenylation during virus transcription, which interferes with the production of vector-containing virions (Coffin & Varmus, 1996).

4. Perform a midi- or maxi-scale plasmid DNA preparation for each plasmid that will be transfected into the packaging cells. For guaranteed transfection-grade plasmid DNA, we recommend using **NucleoBond Xtra Midi Plus or Maxi Plus Kits** (Figure 5; Cat. Nos. 740412.10 and 740416.10). For rapid production of endotoxin-free, transfection-grade plasmid DNA, use **NucleoBond Xtra Midi EF Plus or Maxi EF Plus Kits** (Cat. Nos. 740422.10 and 740426.10).

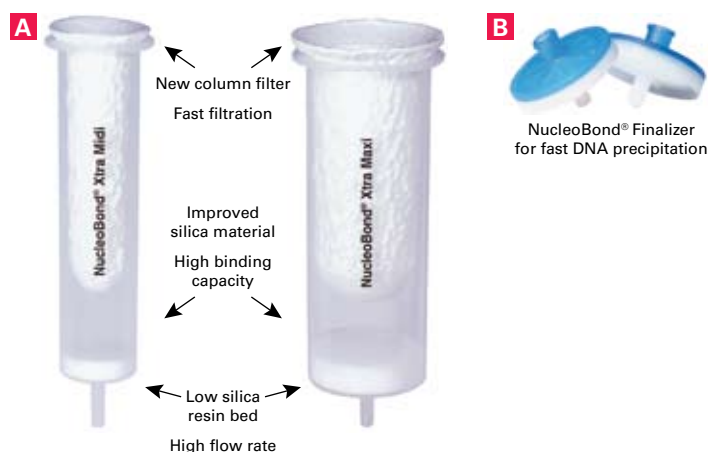


Figure 5. Advanced features of NucleoBond Xtra Maxi and Midi Columns and NucleoBond Finalizer. NucleoBond Xtra columns contain a high-flow column filter that minimizes clogging and clears debris from cell lysates during column loading. An improved silica resin provides high DNA-binding capacity, and a wide column diameter keeps the resin bed low for maximum flow rates (**Panel A**). The NucleoBond Finalizer system speeds preparation and increases purity by capturing precipitated DNA on a syringe filter where it can be easily washed and eluted (**Panel B**).

VII. Producing Lentivirus from the Lenti-X Vectors

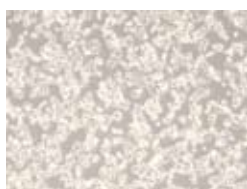


Protocol
2–4
days

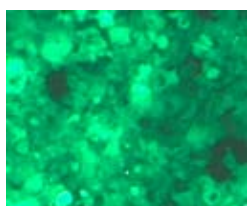


STOP!
Don't forget:

- Tet System Approved FBS
- 100 mm culture plates
- Transfection-grade DNA



*These 293T cells were plated at an optimal transfection density.



**An example of 293T cells at virus harvest, shown here using a transfer vector containing ZsGreen1.

A. Protocol: Using the Lenti-X HTX Packaging System to Produce Lentiviral Supernatants

To obtain the highest titers from the Lenti-X HTX Packaging System, use the Lenti-X 293T Cell Line and adhere strictly to the following protocol, especially with respect to: (1) **culture size and volume**; (2) **DNA amounts and transfection-grade quality**; (3) **tetracycline-free serum in Lenti-X 293T growth media**; and (4) **incubation times**.

All Xfect™ transfection reagents, volumes, and conditions are optimized for use with Lenti-X Vectors, the Lenti-X HTX Packaging Mix, and Lenti-X 293T cells. Use **100 mm tissue culture plates** and be sure to use **Tet System Approved FBS** (guaranteed Tc-free), both in the transfection medium (Step 1) and in the medium used to collect the virus (Step 8). Tetracycline-contaminated serum is detrimental to the expression of essential packaging components in the Lenti-X Packaging System, and subsequent Tet-On Advanced System performance will be negatively affected by serum containing tetracycline contaminants (see Section III.B).

Perform all steps in a sterile tissue culture hood. Lentivirus requires the use of a Biosafety Level 2 facility. Recombinant pseudotyped lentiviruses packaged from HIV-1-based vectors are capable of infecting human cells. Know and use appropriate safety precautions (See Section IV).

1. Approximately 24 hr before transfection, seed 4–5 x 10⁶ Lenti-X 293T cells/100 mm plate, in 10 ml of growth medium. Make sure that the cells are plated evenly. Incubate at 37°C, 5% CO₂ overnight. Continue to incubate the cells until you are ready to add the transfection mixture in Step 7. The cells should be 80–90% confluent at the time of transfection.
2. Thoroughly vortex Xfect Polymer.
3. For each transfection sample, prepare two microcentrifuge tubes by adding reagents in the order listed:

Tube 1 (Plasmid DNA)

557	μl	Xfect Reaction Buffer
36	μl	Lenti-X HTX Packaging Mix
7	μl	Lenti-X Vector DNA (1 μg/μl)
600	μl	Total Volume

Tube 2 (Polymer)

592.5	μl	Xfect Reaction Buffer
7.5	μl	Xfect Polymer
600	μl	Total Volume

Note: It is crucial that the Xfect Polymer does not remain in aqueous solution for longer than 30 min at room temperature.

4. Vortex each tube well to mix.
5. Add the Polymer solution (Tube 2) to the DNA solution (Tube 1) and vortex well at a medium speed for 10 sec.
6. Incubate each DNA-Xfect mixture for 10 min at room temperature to allow nanoparticle complexes to form.
7. Add the entire 1200 μl of DNA-Xfect solution from Step 5 dropwise to cultured cells from Step 1. Rock the plate gently back and forth to mix.

Note: It is normal for the medium to change color slightly upon addition of the DNA-Xfect solution.

8. Incubate the plate at 37°C.
9. After 4 hr to overnight, replace the transfection medium with 10 ml fresh complete growth medium (containing Tet System Approved FBS) and incubate at 37°C for an additional 24–48 hr. Viral titers will generally be highest at 48 hr after the start of transfection. Caution: discarded medium contains infectious lentivirus.
10. Harvest the lentiviral supernatants and pool similar stocks, if desired. Caution: supernatants contain infectious lentivirus. Centrifuge briefly (500 x g for 10 min) or filter through a 0.45 μm filter to remove cellular debris.

Note: The filter used should be made of cellulose acetate, or polysulfonic (low protein binding), instead of nitrocellulose. Nitrocellulose binds proteins present in the membrane of lentivirus and destroys the virus.

11. Verify virus production with Lenti-X GoStix™ (see protocol PT5123-2 for details) or titrate the virus stock (Section VIII), then use the virus to transduce target cells, or store at –80°C.

Note: Titers can drop as much as 2–4 fold with each freeze-thaw cycle.

VIII. Lentivirus Titration

A. Summary

Instant qualitative titer test: You can assess the quality of your lentivirus stock in 30 seconds with Clontech's **Lenti-X GoStix** (Cat. Nos. 631241, 631243 & 631244). The GoStix detect lentiviral p24 in only 20 µl, and can be used to determine whether virus production is within a usable range or for selecting the best time to harvest your virus. A 3 prep sample is supplied for free with many of Clontech's Lenti-X systems.

Quantitative titer test: To transduce using a known multiplicity of infection (MOI), it is necessary to titrate your lentiviral stocks. We recommend the **Lenti-X qRT-PCR Titration Kit** (Cat. No. 632165) or **Lenti-X p24 Rapid Titer Kit** (Cat. No. 632220) for very rapid quantitative titrations of virus stocks (~4 hr), or a traditional method that relies on infection. The latter consists of infecting cells with serial dilutions of the stock, selecting for stable transductants with antibiotic and counting the resulting cell colonies (Section B). Freshly harvested virus can be titered immediately, or frozen in aliquots at -80°C and then titrated. Note that each freeze-thaw cycle can reduce the functional titers of infectious virus by up to 2–4 fold. Absolute titers will depend heavily on the cell type used for titration, and there may be significant differences between the titer values determined in cells typically used for lentiviral titration (i.e. HT-1080) and the number of target cells transduced by the titered virus. However, titrations serve to determine the relative virus content of different viral stocks prepared from different vectors. Determining the viral titer is necessary for the following reasons:

- Confirming that viral stocks are viable.
- Determining the proper transduction conditions for your particular cell type by adjusting the MOI for the desired transduction efficiency. $\text{MOI} = \text{No. of infectious virus particles per target cell}$
- Determining the precise regulator-to-response ratio that produces the optimum induction profile.
- Determining the maximum number of target cells that can be transduced by a given virus volume.



Protocol
7–14
days



B. Protocol: Determining Viral Titer by Colony Formation

1. Plate HT-1080 cells (or other) in 6-well plates the day before performing the titration infections. Plate 2×10^5 cells/well, in 2 ml of medium. Allow at least one well to be used as a “no infection” control.
2. Prepare 20 ml of complete medium and add 60 µl of 4 mg/ml polybrene. This will be diluted 3-fold for a final polybrene concentration of 4 µg/ml.
Note: Polybrene is a polycation that reduces charge repulsion between the virus and the cellular membrane. The optimum final concentration of polybrene may be determined empirically but generally falls within a range of 2–12 µg/ml. Excessive exposure to polybrene (>24 hr) can be toxic to cells.
3. Prepare filtered viral supernatant from packaging cells (Section VII). This is the virus stock.
4. Prepare six 10-fold serial dilutions of the virus stock as follows:
 - a. Add 1.35 ml of medium containing polybrene (Step 2) to each of six sterile and numbered 1.5 ml microfuge tubes.
 - b. Add 150 µl of the virus stock (Step 3) to the tube 1. Mix.
 - c. Transfer 150 µl tube 1 to tube 2 and mix. Continue making serial dilutions by transferring 150 µl from each successive dilution into the next prepared tube.
5. Infect the HT-1080 cells by adding 1 ml of each viral dilution (Step 4) to each appropriate well. The final polybrene concentration will be 4 µg/ml in ~3 ml. Centrifuge the cultures to improve infection efficiency*.
***NOTE: CULTURE CENTRIFUGATION INCREASES INFECTION EFFICIENCY.** Centrifuging the plate at 1,200 x g for 60–90 min at 32°C can significantly increase infection efficiency. A room temperature centrifuge is acceptable if a 32°C unit is not available.
6. After infecting for 8–24 hours, remove supernatants and subject the cells to G418 or puromycin selection using the selection concentrations that are optimal for your cell line (Appendix A).
7. Allow colonies to form for 7–14 days. Stain the colonies with 1% crystal violet solution (in 10% ethanol) and count.
8. The titer of virus corresponds to the number of colonies generated by the highest dilution, multiplied by the dilution factor. For example, the presence of 4 colonies in the 10^6 dilution would represent a viral titer of 4×10^6 colony forming units.



Attention

IX. Testing the Inducibility of Tet-On Advanced in Your Target Cells

A. Summary

Performing pilot experiments using the LVX-Tet-On Advanced lentivirus, the LVX-Tight-Puro-Luc control lentivirus, and your target cells provides a means of rapidly testing the infectivity of your lentiviral stocks and the induction capabilities of the Lenti-X Tet-On Advanced System in these cells.

Other points to consider:

- The experiment outlined below also provides a "hands-on" introduction to the Tet System and verifies that your culture system, induction conditions, and reagents are working properly.
- In order to characterize your system more rapidly, you can perform the pilot experiment by using virus ratios based on volumes of virus stock rather than on titer values.
- If your target cells are especially rare or difficult to prepare, you may prefer to test the system using a readily available cell line that is compatible with lentiviral transduction.
- Once the stocks are titered, we suggest that you perform a Dox dose-response experiment, using the best coinfection ratio of the two lentiviruses, to determine the maximum fold-induction conditions.
- You should also test the induction properties of your LVX-Tight-Puro-GOI lentivirus, either in a readily available cell line or in the target cell of your choice.



Protocol
2–3
days

B. Protocol: Testing Luciferase Induction in Target Cells

- Using 6-well plates, seed $0.5\text{--}2 \times 10^5$ target cells/well in 2 ml medium. Use a sufficient number of plates to infect cells at the following virus ratios, each with and without Dox (500 ng/ml), and testing all conditions in duplicate (i.e. a minimum of 4 wells per virus ratio).

pLVX-Tet-On Advanced : pLVX-Tight-Puro-Luc

- | | |
|----|------------------|
| a. | 0 : 0 (no virus) |
| b. | 1 : 1 |
| c. | 1 : 4 |
| d. | 4 : 1 |

- Prepare two volumes of culture medium (allow 2 ml/well), each containing one of the following sets of additives:
 - 6 µg/ml polybrene and 750 ng/ml Dox (for +Dox treatments)
 - 6 µg/ml polybrene only (for –Dox treatments)
- Exchange the cell culture medium in the plates with 2 ml of the appropriate medium prepared in Step 2. Return the plates to the incubator.

Note: In this case, polybrene will be diluted to a final concentration 4 µg/ml after adding 1 ml of virus stock (Step 6). Adjust the polybrene concentration accordingly if a different concentration is known to produce optimal results.

- Thaw aliquots of virus stocks or use filtered virus stocks prepared from 293T packaging cells transfected with pLVX-Tet-On Advanced and pLVX-Tight-Puro-Luc (Section VII). If the stocks have been titered, adjust them to contain equal amounts of infectious virus. If the stocks are untitered you may also need to dilute the stocks for optimum results (see the Information Box on page 15). *Be sure to use culture medium containing Tet System Approved FBS (see Section III.B).*
- In 15 ml conical tubes, prepare 5 ml of combined virus stock for each virus ratio below. Mix gently, do not vortex:
 - 1:1 = combine 2.5 ml of each virus stock
 - 1:4 = combine 1.0 ml of LVX-Tet-On Advanced with 4.0 ml LVX-Tight-Puro-Luc
 - 4:1 = combine 4.0 ml of LVX-Tet-On Advanced with 1.0 ml LVX-Tight-Puro-Luc



IX. Testing the Inducibility of Tet-On Advanced in Your Target Cells continued

B. Protocol: Testing Luciferase Induction in Target Cells (continued)



6. Add 1 ml of the combined virus stocks to the appropriate wells and infect the cells for 8–24 hr.

Note: Centrifuging the plates at 1,200 x g for 60–90 min at 32°C can significantly increase infection efficiency. A room temperature centrifuge is acceptable if a 32°C unit is not available.

7. After the infection, remove and discard the virus-containing culture medium. Feed the cells using fresh medium, with or without Dox as appropriate, and incubate the infected cells for 48–72 hr.
8. Harvest the cells and assay for luciferase activity. Calculate the fold-induction obtained for each condition (i.e., +Dox RLU/–Dox RLU).



Using Untitered Lenti-X HTX Stocks and Supernatants

The Lenti-X HTX Packaging System is capable of producing very high titers of virus. Using large excesses of virus can be detrimental to target cell performance. If you have not determined the titer of your virus stock, perform transduction experiments using several different fold-dilutions to test a range of MOIs. At Clontech, our scientists often transduce an entire 100 mm dish of target cells using only 10–100 µl of unconcentrated supernatant.

X. Transducing Target Cells with the Tet-On Advanced Lentiviruses

A. Summary

- **Simultaneous Cotransduction:** To establish the complete Tet-On Advanced System, target cells must be cotransduced with the LVX-Tet-On Advanced and LVX-Tight-Puro-GOI lentiviruses. Using high titers of each virus ensures that the highest proportion of cells will contain both vectors. Depending on your application, transduced cells can be either treated immediately with Dox to induce expression of your GOI and then harvested for analysis, or the cells may be selected with G418 and puromycin to isolate doubly-transduced clones or to enrich the population for doubly-transduced cells (see Appendix B).
- **Virus Ratio Optimization:** It is possible to optimize the induction characteristics of your system by infecting target cells with different ratios of the regulator and response lentiviruses. Using a ratio that favors the response vector (LVX-Tight-Puro-GOI) over the regulator vector (LVX-Tet-On Advanced) can produce maximum overall expression of the GOI. Alternatively, using a ratio that favors the regulator vector will generally produce the absolute lowest basal expression levels and can achieve maximum fold-induction. The optimal ratio can be determined in pilot studies (Section IX).
- **Sequential Transduction:** If you are working with a clonable cell line, we recommended that you perform sequential transductions with the lentiviruses so that you can obtain clones that have optimal inducibility characteristics. This method produces clones that have the highest expression levels, lowest backgrounds, and highest fold-induction. Briefly, cells are first transduced with only the LVX-Tet-On Advanced lentivirus, followed by selection with G418. Resistant clones are then screened for expression of Tet-On Advanced and tested for inducibility. A favorable, Tet-On Advanced clone is then transduced with the LVX-Tight-Puro-GOI lentivirus. Doubly-transduced cells are selected using puromycin and the resulting puromycin-resistant clones are then screened for GOI inducibility. *For more information on sequential transduction, clone selection, and clone screening, consult our Retro-X™ Tet-On Advanced Inducible Expression System User Manual (PT3958-1) available at www.clontech.com*



B. Protocol: Cotransducing Target Cells with the Lenti-X Tet-On Advanced Lentiviruses

1. Plate target cells in complete growth medium 12–18 hr before transduction.
2. Thaw aliquots of your LVX-Tet-On Advanced and LVX-Tight-Puro-GOI lentiviral stocks, or use filtered virus stocks freshly prepared from packaging cells (Section VII). Mix gently, but do not vortex.
3. Add polybrene to the cell cultures to obtain the desired final concentration during the transduction step (e.g. 4 µg/ml). Add the predetermined optimal concentration of Dox to the appropriate cultures.
4. Combine the LVX-Tet-On Advanced and LVX-Tight-Puro-GOI lentiviral stocks in the desired ratio and MOI, as determined from pilot studies. If titer values are unknown, use serial dilutions of the viruses mixed at a ratio of 1:1, such that the total volume of supernatant used makes up no more than 1/3 the final volume of culture medium used in the transduction. Centrifuge the cultures to improve transduction efficiency (see Section VIII.B).
5. Transduce the cells for 8–24 hr. If you are concerned that exposure to either the polybrene or to the viral supernatant (which contains medium conditioned by the packaging cells) may adversely affect your target cells, limit the transduction to 6–8 hr.
6. Remove and discard the virus-containing medium and replace it with fresh growth medium, with or without Dox, as appropriate. Alternatively, passage the cultures and subject the cells to selection using G418 and puromycin.
7. Continue to incubate the cells for 24–48 hr to allow the expressed protein to accumulate.
8. Harvest the cells for analysis.

XI. References

You can access further information on Tet Systems products on our website: www.clontech.com. Clontech's Tet Systems were developed in cooperation with Dr. Bujard and his colleagues at the Center for Molecular Biology in Heidelberg (ZMBH) and in Dr. Wolfgang Hillen's laboratory at the University of Erlangen, Germany. Additional background information on Tet-regulated gene expression systems and an extensive bibliography are available at the website maintained by TET Systems: <http://www.tetsystems.com>. (Please note that Clontech is not responsible for the information contained on this website.)

- Ausubel, F. M., Brent, R., Kingston, D. E., Moore, D. M., Seidman, J. G., Smith, J. A. & Struhl, K., eds. (1995) *Current Protocols in Molecular Biology* (John Wiley & Sons, NY).
- Baron, U., Freundlieb, S., Gossen, M. & Bujard, H. (1995) Co-regulation of two gene activities by tetracycline via a bidirectional promoter. *Nucleic Acids Res.* **23**:3605–3606.
- Baron, U., Gossen, M. & Bujard, H. (1997) Tetracycline controlled transcription in eukaryotes: novel transactivators with graded transactivation potentials. *Nucleic Acids Res.* **25**:2723–2729.
- Cochrane, A. W., Chen, C. H., & Rosen C. A. (1990) Specific interaction of the human immunodeficiency virus Rev protein with a structured region in the env mRNA. *Proc Natl Acad Sci U S A.* **87**:1198–202.
- Coffin, J. M., Hughes, S. H. & Varmus, H. E., eds. (1997) *Retroviruses*, Cold Spring Harbor Laboratory Press (Cold Spring Harbor, NY).
- Freshney, R. I. (2005) *Culture of Animal Cells, 5th Edition*, Wiley-Liss (New York, NY).
- Freundlieb, S., Schirra-Müller, C. & Bujard, H. (1999) A tetracycline controlled activation/repression system with increased potential for gene transfer into mammalian cells. *J. Gene Med.* **1**:4–12.
- Gossen, M., Bonin, A. & Bujard, H. (1993) Control of gene activity in higher eukaryotic cells by prokaryotic regulatory elements. *Trends Biochem. Sci.* **18**:471–475.
- Gossen, M. & Bujard, H. (1992) Tight control of gene expression in mammalian cells by tetracycline responsive promoters. *Proc. Natl. Acad. Sci. USA* **89**:5547–5551.
- Gossen, M. & Bujard, H. (1995) Efficacy of tetracycline-controlled gene expression is influenced by cell type. *BioTechniques* **89**:213–215.
- Gossen, M. & Bujard, H. (2002) Studying gene function in eukaryotes by conditional gene inactivation. *Annu. Rev. Genet.* **36**:153–73.
- Gossen, M., Freundlieb, S., Bender, G., Müller, G., Hillen, W. & Bujard, H. (1995) Transcriptional activation by tetracycline in mammalian cells. *Science* **268**:1766–1769.
- Harkin, D. P., Bean J. M., Miklos D, Song Y. H., Truong V. B., Englert C, Christians F. C., Ellisen L. W., Maheswaran S., Oliner J. D. & Haber D. A. (1999) Induction of GADD45 and JNK/SAPK-dependent apoptosis following inducible expression of BRCA1. *Cell* **97**:575–586.
- Higashikawa, F. & Chang L. (2001) Kinetic Analysis of stability of simple and complex retroviral vectors. *Virology* **280**:124–131.
- High-Efficiency Lentiviral Packaging (2007) *Clontechniques XXII*(3):1–2.
- Inducible Gene Expression Systems (2007) *Clontechniques XXII*(1):1–2.
- Inducible Lentiviral Gene Expression Systems (2007) *Clontechniques XXII*(3):3–5.
- Kozak, M. (1987) At least six nucleotides preceding the AUG initiator codon enhance translation in mammalian cells. *J Mol Biol.* **196**:947–50.
- Kwon, Y. J., Hung, G., Anderson, W.F., Peng, C.A. & Yu, H. (2003) Determination of infectious retrovirus concentration from colony-forming assay with quantitative analysis. *J. Virol.* **77**:5712–5720.
- pTRE-Tight Vectors (2003) *Clontechniques XVIII*(2):10–11.
- Sambrook, J., Fritsch, E. F. & Maniatis, T., eds. (2001). *Molecular Cloning: A Laboratory Manual*, Cold Spring Harbor Laboratory Press (Cold Spring Harbor, NY).
- TetR Monoclonal Antibody (2007) *Clontechniques XXII*(1):3.
- Triezenberg, S. J., Kingsbury, R. C. & McKnight, S. L. (1988) Functional dissection of VP16, the trans-activator of herpes simplex virus immediate early gene expression. *Genes Devel.* **2**:718–729.
- Urlinger, S., Baron, U., Thellmann, M., Hasan, M.T., Bujard, H. & Hillen, W. (2000) Exploring the sequence space for tetracycline-dependent transcriptional activators: Novel mutations yield expanded range and sensitivity. *Proc. Natl. Acad. Sci. USA* **97**(14):7963–7968.
- Wu, X., Wakefield, J. K., Liu, H. Xiao, H., Kralovics, R., Prchal, J. T. & Kappes, J. C. (2000) Development of a Novel Trans-Lentiviral Vector That Affords Predictable Safety *Mol. Ther.* **2**(1):47–55.
- Yao, F., Svenjo, T., Winkler, T., Lu, M, Eriksson, C. & Eriksson, E. (1998) Tetracycline repressor, tetR, rather than the tetR-mammalian cell transcription factor fusion derivatives, regulates inducible gene expression in mammalian cells. *Hum. Gene Ther.* **9**:1939–1950.
- Yarronton, G. T. (1992) Inducible vectors for expression in mammalian cells. *Curr. Opin. Biotechnol.* **3**:506–511.
- Yin, D. X. & Schimke, R. T. (1995) Bcl-2 expression delays drug-induced apoptosis but does not increase clonogenic survival after drug treatment in HeLa cells. *Cancer Res.* **55**:4922–4928.
- Yin, D. X., Zhu, L. & Schimke, R. T. (1996) Tetracycline controlled gene expression system achieves high-level and quantitative control of gene expression. *Anal. Biochem.* **235**:195–201.
- Zennou, V., Petit, C., Guetard, D., Nerhbass, U., Montagnier, L. & Charneau, P. (2000) HIV-1 genome nuclear import is mediated by a central DNA flap. *Cell* **101**:173–185.
- Zufferey, R., Donello, Trono, D. & Hope, T. J. (1999) Woodchuck hepatitis virus posttranscriptional regulatory element enhances expression of transgenes delivered by retroviral vectors. *J. Virol.* **73**:2886–2892.

Appendix A: Vector Information

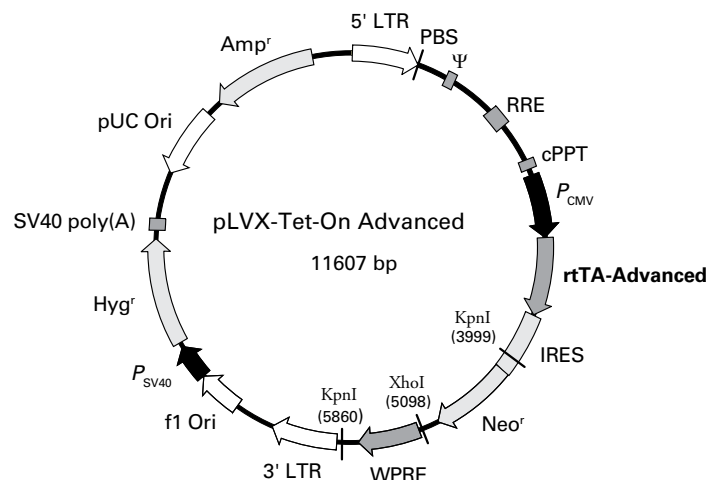


Figure 6. Map of the pLVX-Tet-On Advanced Vector. For a complete vector description, refer to the enclosed pLVX-Tet-On Advanced Vector Information Packet (PT3990-5).

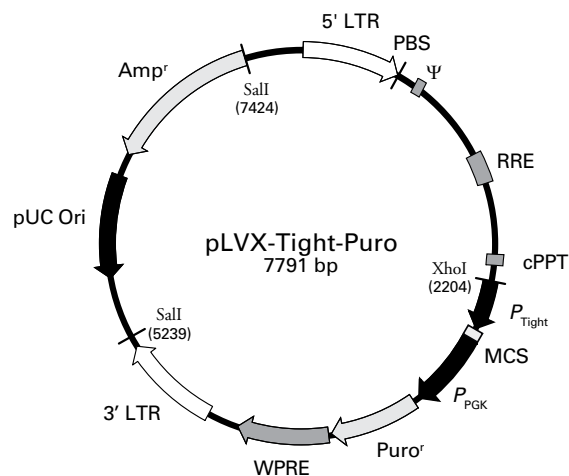


Figure 7. Map of the pLVX-Tight-Puro Vector. For a complete vector description and MCS diagram, refer to the enclosed Vector Information Packet (PT3996-5).

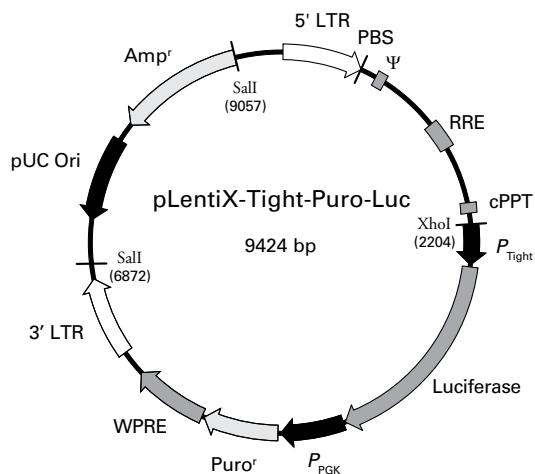


Figure 8. Map of the pLVX-Tight-Puro-Luc Vector. For a complete vector description, refer to the Vector Information Packet (PT3997-5) available at www.clontech.com

Appendix B: Additional Protocols

A. Protocol: Titrating Antibiotics for Selecting Single- and Double-Stable Cell Lines.

Prior to using the antibiotics G418 and/or puromycin to select either singly- or doubly-transduced cells, it is necessary to titrate each selection agent to determine the optimal concentration for your target cell line. With HeLa cells, for example, we have found 400 µg/ml G418 and 1.0 µg/ml puromycin to be optimal.

- For selecting stable transformants with G418, use the lowest concentration that results in massive cell death in ~5 days and kills all the cells within two weeks.
 - Puromycin selection occurs more rapidly; use a concentration that will kill all cells within 3–4 days.
 - **IMPORTANT:** Lot-to-lot variations in potency exist for all selection drugs, so each new lot of antibiotic should be titrated.
1. For each antibiotic to be tested, plate 2×10^5 cells in each well of a 6-well plate containing 3 ml of the appropriate complete medium plus increasing concentrations of G418 (0, 50, 100, 200, 400, and 800 µg/ml). For puromycin, add the drug at 0, 1.0, 2.5, 5.0, 7.5, and 10.0 µg/ml.
 2. For G418, incubate the cells for 5–10 days or until all cells are dead. Examine the dishes for viable cells every two days. Replace the selective medium every four days (or more often if necessary), until the optimal concentration is determined.
 3. For puromycin, incubate the cells 4–7 days. Replace medium after 2 days to remove dead cells.

Notice to Purchaser

Clontech products are to be used for research purposes only. They may not be used for any other purpose, including, but not limited to, use in drugs, *in vitro* diagnostic purposes, therapeutics, or in humans. Clontech products may not be transferred to third parties, resold, modified for resale, or used to manufacture commercial products or to provide a service to third parties without written approval of Clontech Laboratories, Inc.

Lentivirus Products:

Portions of this product are covered by several patent applications owned by, or licensed to, Open Biosystems, Inc. The purchase of this product conveys to the buyer the limited, non-exclusive, non-transferable right (without the right to resell, repackage, or further sublicense) under these patent rights to perform the viral infection methods using the lentiviral vectors claimed in those patent applications for research purposes solely in conjunction with this product. No other license is granted to the buyer whether expressly, by implication, by estoppel or otherwise. In particular, the purchase of this product does not include nor carry any right or license to use, develop, or otherwise exploit this product commercially, and no other rights are conveyed to the buyer to use the product or components of the product of any other purposes, including without limitation, provision of services to a third party, generation of commercial databases, or clinical diagnostics or therapeutics.

This product is sold pursuant to a license from Open Biosystems, Inc., and Open Biosystems, Inc. reserves all other rights under these patent rights. For information on purchasing a license to the patent rights for uses other than in conjunction with this product or to use this product for purposes other than research, please contact Open Biosystems' licensing officer at 256-319-1462.

VSV-G:

VSV-G is licensed from Pangenix and its use is covered under U.S. Patent Nos. 5,512,421 and 5,670,354. Rights to use this product are limited to nonhuman research only and use of the patented technology in domestic ungulates is expressly prohibited. No other rights are conveyed. Inquiry into the availability of a license for commercial purposes should be directed to Jane C. Burns, M.D., Pangenix, 6505 El Camino del Teatro, La Jolla, CA 92037.

WPRE Purchaser Notification:

Clontech has a license to sell products containing WPRE, under the terms described below. Any use of WPRE outside of Clontech's product or the product's intended use, requires a license as detailed below. Before using the product containing WPRE, please read the following license agreement. If you do not agree to be bound by its terms, contact Clontech within 10 days for authorization to return the unused product containing WPRE and to receive a full credit.

Patents: The WPRE technology is covered by patents issued to The Salk Institute for Biological Studies.

Individual License Agreement: Clontech grants you a non-exclusive license to use the enclosed product containing WPRE in its entirety for its intended use. The product is being transferred to you in furtherance of, and reliance on, such license. Any use of WPRE outside of Clontech's product or the product's intended use, requires a license from the Salk Institute for Biological Studies.

Termination of License: This license agreement is effective until terminated. You may terminate it at any time by destroying all products containing WPRE in your control. It will also terminate automatically if you fail to comply with the terms and conditions of the license agreement. You shall, upon termination of the license agreement, destroy all products containing WPRE in your control, and so notify Clontech in writing. This License shall be governed in its interpretation and enforcement by the laws of the State of California.

Contact for WPRE Licensing:
The Salk Institute for Biological Studies
10010 North Torrey Pines Road
La Jolla, CA 92037
Attn.: Office of Technology Management
Phone: 858.453.4100 ext. 1275
Fax: 858.546.8093

Notice to Purchaser (continued)

Limited cPPT Element license related to lentiviral products:

This product and its use are the subject of U.S. Pat. No. 6,682,907

The purchase of this product conveys to the buyer the non-transferable right to use the purchased amount of the product and components of the product in research conducted by the buyer (whether the buyer is an academic or for-profit entity). The buyer cannot disclose information, sell or otherwise transfer this product, its components or materials made using this product or its components to a third party or otherwise use this product or its components or materials made using this product or its components for any commercial purposes. If the buyer is not willing to accept the limitations of this limited use statement, Clontech is willing to accept return of the product with a full refund. For information on purchasing a license to the DNA-Flap technology for purposes other than research, contact the Office of Technology Transfer, Institut Pasteur, 28 rue du Docteur Roux, 75724 Paris Cedex 15 (www.pasteur.fr).

BGH Poly(A) Sequence:

Clontech Laboratories, Inc. allows the consumer to use the products for "RESEARCH USES" only.

commercial use; or

(e) any use for drug screening or drug development.

The term "CLAIMED DNA" means a DNA construct that contains the BGH polyadenylation signal and "CLAIMED CELL" means any

requires one or more nonexclusive

license(s) from KC1. For further information please contact KC1 at 520.48.4400.

Tet-Based Expression Products:

Use of the Tetracycline controllable expression systems (the "Tet Technology") is covered by a series of patents including U.S. Patent Nos. 5,464,758 & 5,814,618, which are proprietary to TET Systems Holding GmbH & Co. KG. Academic research institutions are granted an automatic license with the purchase of this product to use the Tet Technology only for internal, academic research purposes, which license specifically excludes the right to sell, or otherwise transfer, the Tet Technology or its component parts to third parties. Notwithstanding the above, academic and not-for profit research institutions whose research using the Tet Technology is sponsored by for-profit organizations, which shall receive ownership to all data and results stemming from the sponsored research, shall need a commercial license agreement from IP Merchandisers in order to use the Tet Technology. In accepting this license, all users acknowledge that the Tet Technology is experimental in nature. TET Systems Holding GmbH & Co. KG makes no warranties, express or implied or of any kind, and hereby disclaims any warranties, representations, or guarantees of any kind as to the Tet Technology, patents, or products. All others are invited to request a license from TET Systems Holding GmbH & Co. KG prior to purchasing these reagents or using them for any purpose. Clontech is required by its licensing agreement to submit a report of all purchasers of the Tet-controllable expression system to IP Merchandisers, Inc.

For license information, please contact:

Hans Peter Kneubuehl

TET Systems Holding GmbH & Co.

KG Im Neuenheimer Feld 582

69120 Heidelberg Germany

Tel +49 6221 588 04 00

Fax +49 6221 588 04 04

eMail: kneubuehl@tet-systems.de

or use the electronic licensing request form via http://www.tetsystems.com/main_inquiry.htm

Transfection Polymers:

Use of this product is covered by one or more of the following U.S. Patent Nos and corresponding patent claims outside the US: 6,998,115 ; 7,427,394.

This product is intended for research purposes only. It may not be used for (i) any human or veterinary use, including without limitation therapeutic and prophylactic use, (ii) any clinical use, including without limitation diagnostic use, (iii) screening of chemical and/or biological compounds for the identification of pharmaceutically active agents (including but not limited to screening of small molecules), target validation, preclinical testing services, or drug development. Any use of this product for any of the abovementioned purposes requires a license from the Massachusetts Institute of Technology.

IRES Sequence:

GoStix Products:

Clontech, the Clontech logo and all other trademarks are the property of Clontech Laboratories, Inc., unless noted otherwise. Clontech is a Takara Bio Company.
©2010 Clontech Laboratories, Inc.

Contact Us For Assistance

Customer Service/Ordering:	Technical Support:
Telephone: 800.662.2566 (toll-free)	Telephone: 800.662.2566 (toll-free)
Fax: 800.424.1350 (toll-free)	Fax: 650.424.1064
Web: www.clontech.com	Web: www.clontech.com
E-mail: orders@clontech.com	E-mail: tech@clontech.com